



CULTURAL HERITAGE DAMAGE ASSESSMENT OF “BEIRUT BLAST”

-PRELIMINARY REPORT IN PHOTOS-



Answering the Beirut call

In the early evening of Tuesday 4 August Beirut was rocked by an enormous explosion of 2,750 tonnes of ammonium nitrate, stored in a warehouse at the Port. The current death toll of 157 is expected to rise as missing people are found below the rubble. At least 5,000 people were injured, many severely, and some 300,000 people have been made homeless. Millions of dollars-worth of damage has been done and it will take years to rebuild those parts of the city devastated by the explosion. This comes on top of the country struggling to cope with the financial situation and Covid-19 pandemic. Our thoughts and prayers are with all of those affected by the explosion.

The immediate priority is, of course, to help and support the injured, displaced, and bereaved and humanitarian help has already poured into the city. However, we must also act to protect the cultural heritage of Lebanon as it will play its part in the reestablishment of normal life and continue to provide a sense of common identity for all Lebanese people.

The UNESCO Office in Beirut and the Lebanese national committee of the Blue Shield (LBS), supported by Blue Shield International (BSI), have been working since the early morning of Wednesday 5 August to make a preliminary assessment of damage to the museums, libraries, and historic buildings of Beirut. This report is the culmination of this work, carried out in full partnership with the Directorate General of Antiquities, and the Lebanese national committees of the International Council of Museums, the International Council on Monuments and Sites, and the International Federation of Library Associations and Institutions. This initial partnership in Beirut has been led and coordinated by Joanne Farchakh Bajjalay representing the LBS/BSI, but each partner has been responsible for the relevant parts of the following report.

An online Damage Assessment Platform, with a simple template for completing more detailed information about all of the buildings mentioned in this preliminary report, is under construction and should be available for use early in the week of 10 August.

We will continue to work together with this partnership over the next few weeks to support all partners in securing their premises as quickly as possible to ensure that their collections remain safe and ready to be enjoyed by this and future generations.

Karl Von Habsburg
President of Blue Shield International

Joseph Kreidi
Program Officer for Culture
UNESCO Office Beirut



Answering the Beirut Call in steps

1

- Preliminary Assessment Report (PAR) in collaboration with DGA and Lebanese committees of IFLA, ICOM, ICOMOS

2

- Launching of the “Damage Assessment Platform (DAP)”

3

- Working with external funders to secure all buildings based on information in the PAR & DAP

4

- Reporting on all measures carried out to secure buildings

5

- Training of CPP units

Institution General Information

Entity Name	National Museum of Lebanon General Directorate of Antiquities & General Council of Museum - Ministry of Culture
Location	Beirut – museum square
Director Name	Sarkis Khoury - Mrs. Anne-Marie Affeiche

Overview of Damage Photos



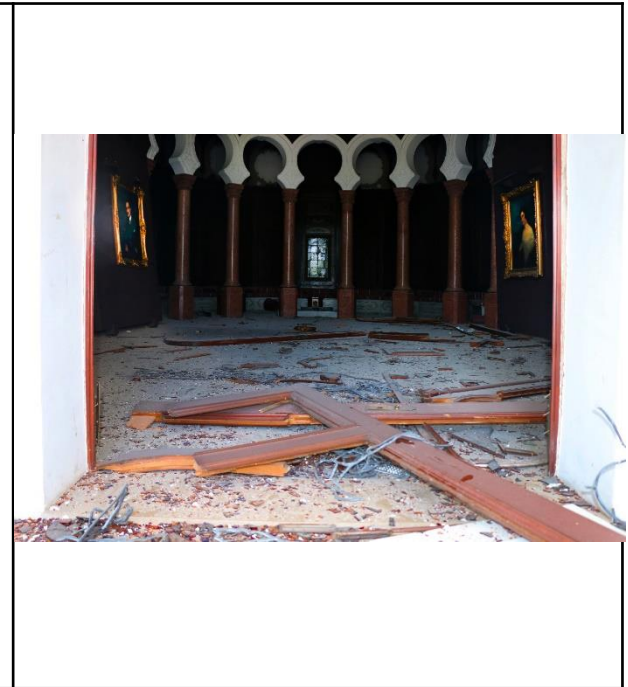
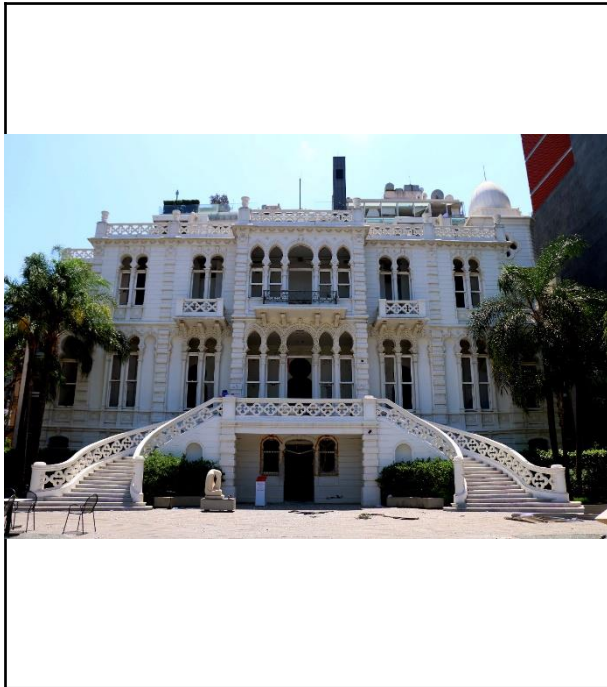
INSTITUTION GENERAL INFORMATION

Name of the national committee	National Committee of ICOM Lebanon
Founding Date in Lebanon	2003
Name of current President	Suzy Hakimian
Assessment Supervised by	Suzy Hakimian

General Information

Entity Name	Sursock Museum
Location	Achrafieh – Beirut www.sursock.museum
Director Name	Zeina Arida -

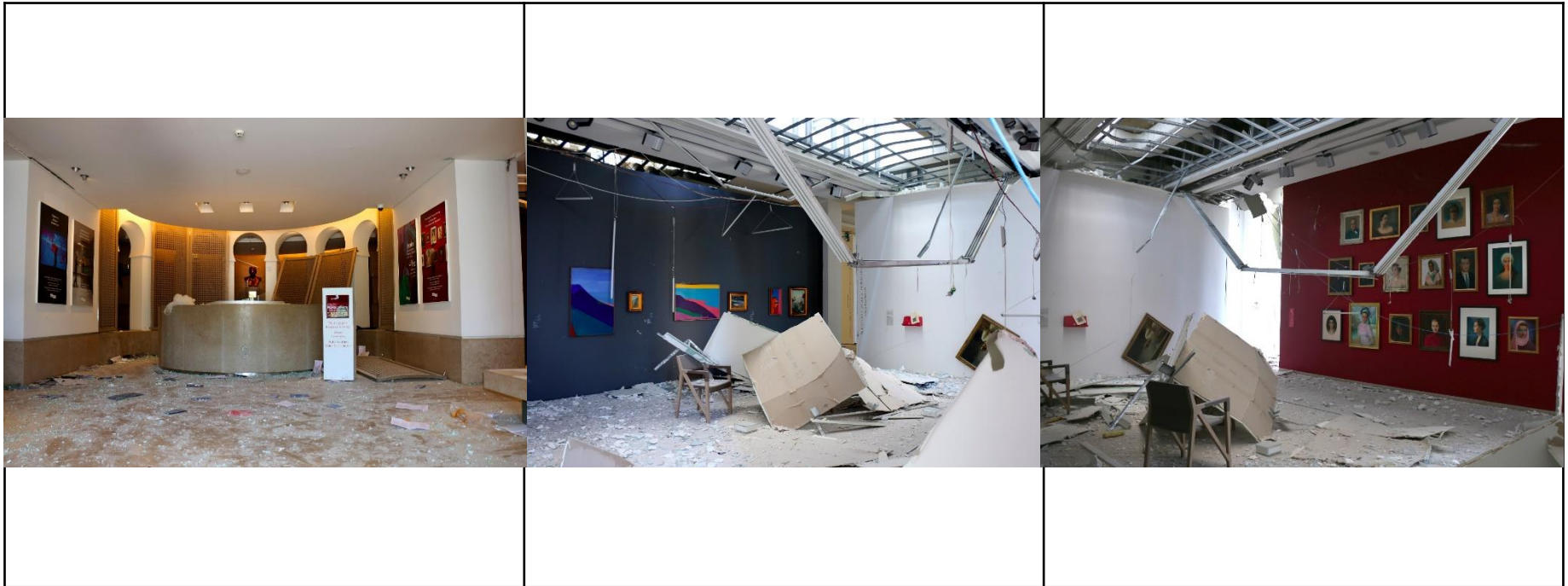
Overview of Damage Photos



General Information

Entity Name	Sursock Museum
Location	Achrafieh – Beirut www.sursock.museum
Director Name	Zeina Arida

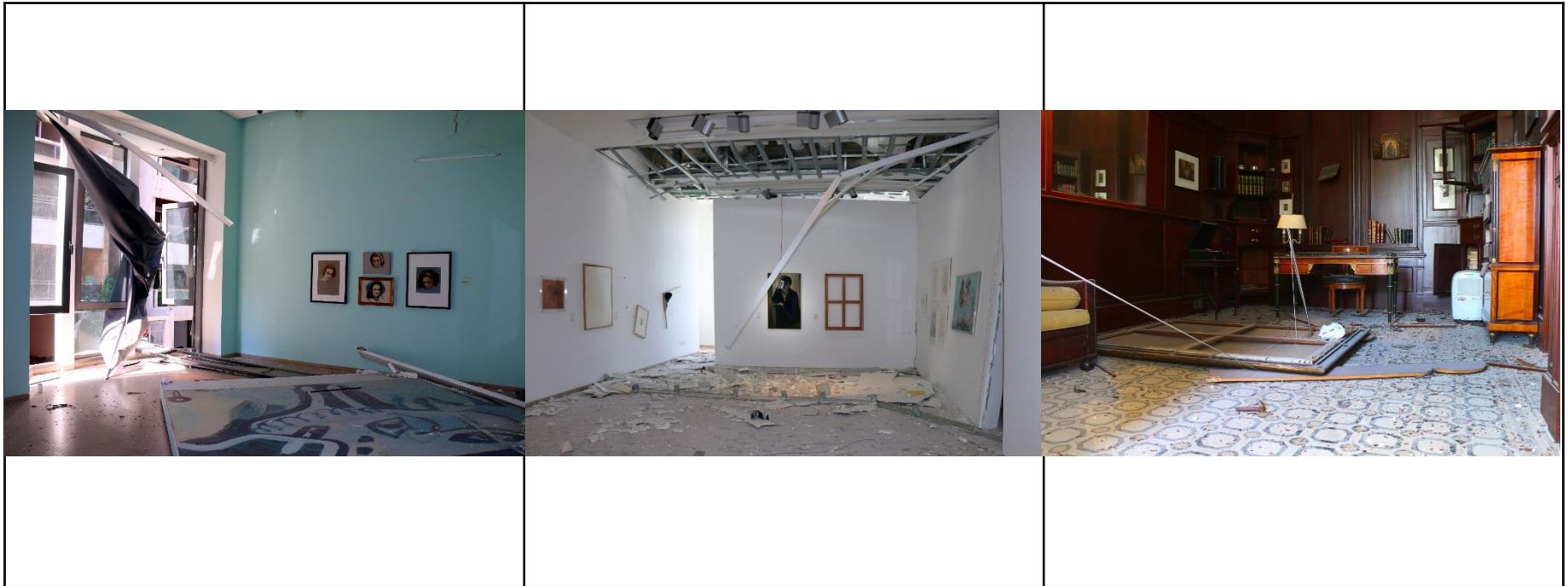
Overview of Damage Photos



General Information

Entity Name	Sursock Museum
Location	Achrafieh – Beirut www.sursock.museum
Director Name	Zeina Arida

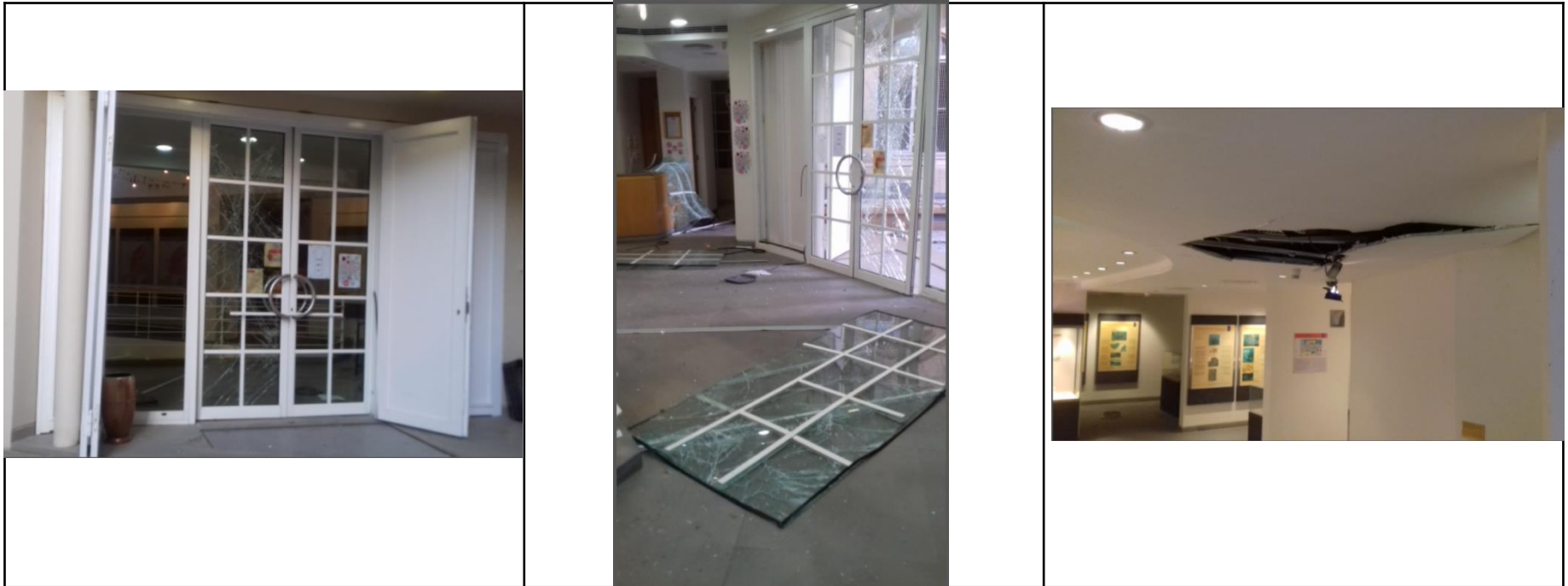
Overview of Damage Photos



General Information

Entity Name	PREHISTORY MUSEUM -USJ
Location and website	Jesuit University – Achrafieh – www.usj.edu.lb/mpj
Director Name	Dr Maya Boustany

Overview of Damage Photos



General Information

Entity Name	Les Merveilles de la Mer Museum
Location	Jdeideh www.wondersofthesea.net
Director Name	

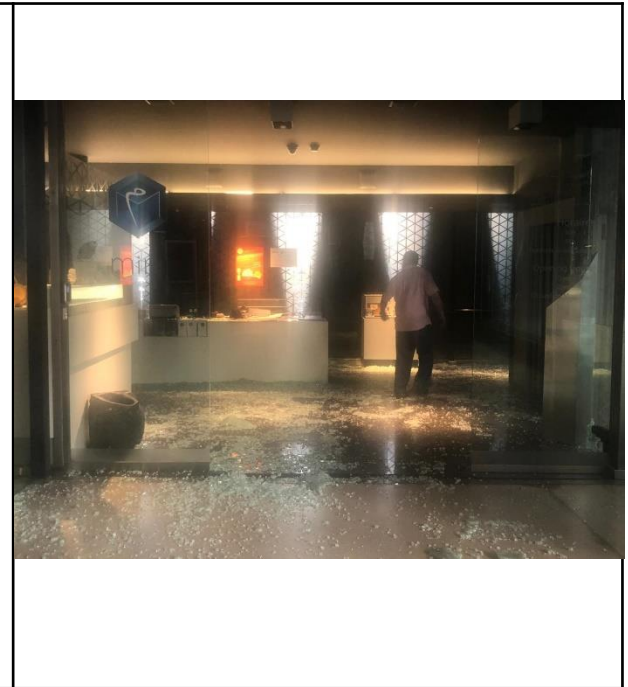
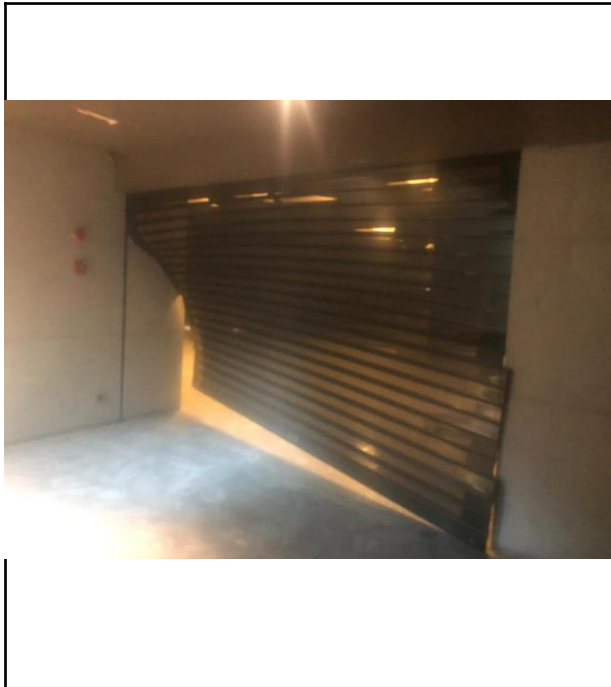
Overview of Damage Photos



General Information

Entity Name	Minerals Museum MIM
Location	Beirut – Achrafieh www.mim.museum
Director Name	Suzy Hakimian

Overview of Damage Photos



INSTITUTION GENERAL INFORMATION	
Name of the national committee	IFLA represented by Lebanese Library Association (LLA)
Founding Date in Lebanon	1960
Name of current President	Dr Fawz Abdallah
Assessment Supervised by	Randa Al Chidiac
Contact details (website, email & phone number)	randachidiac@usek.edu.lb / +961-3-802064

ENTITY NO. 1 General Information

Entity Name	National Library
Founding Date	1922
Location	Sanayeh, Behind the Ministry of Interior, Beirut
Director Name	Dr Hassan Akar

Overview of Damage Photos



General Information

Entity Name	Assabil Association – Beirut Municipal Library - Bashoura
Founding Date	2001
Location	3 rd Fl., Civil Defence Bldg., Basta Street, Beirut
Director Name	Dr Maud Stephan

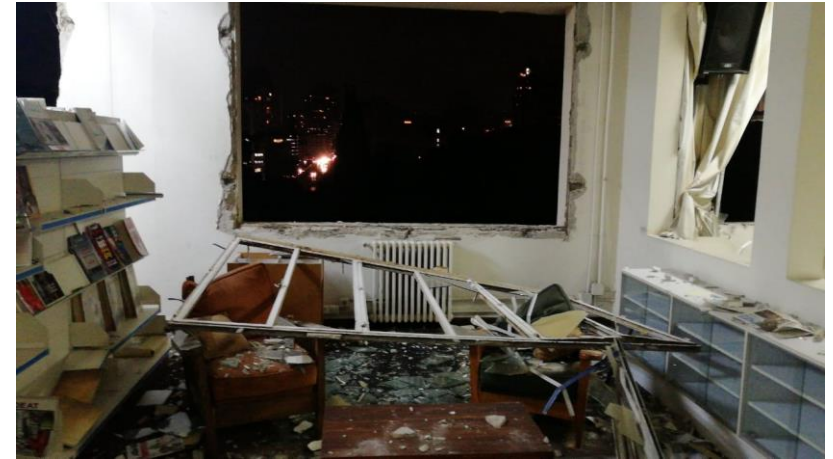
Overview of Damage Photos



General Information

Entity Name	Assabil Association – Beirut Municipal Library - Bashoura
Founding Date	2001
Location	3 rd Fl., Civil Defence Bldg., Basta Street, Beirut
Director Name	Dr Maud Stephan

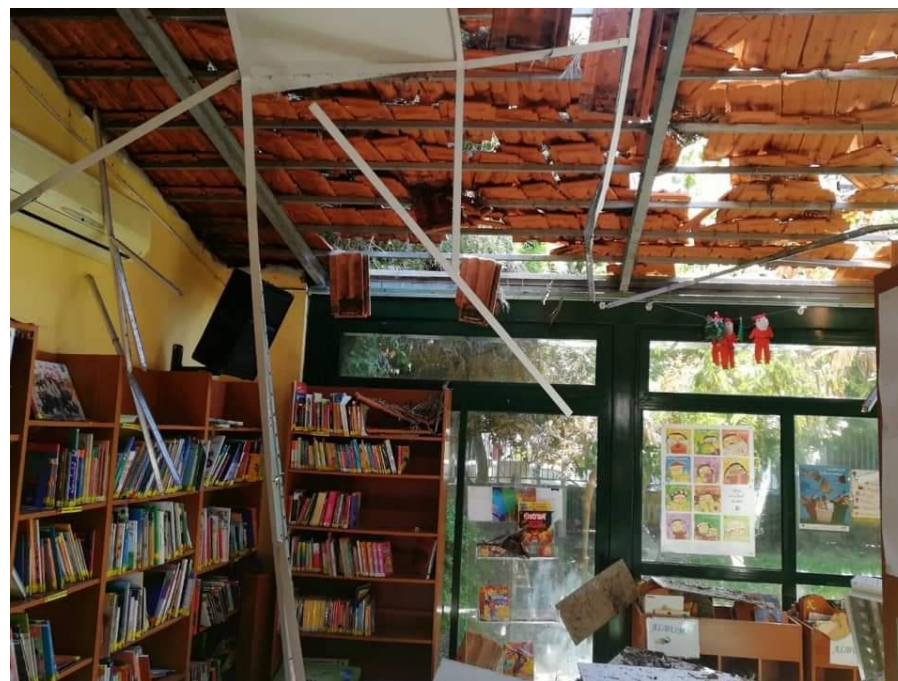
Overview of Damage Photos



General Information

Entity Name	Assabil Association – Beirut Municipal Library - Getaoui
Founding Date	2004
Location	Rmeil, Jesuit Garden, Getaouui, Beirut
Director Name	Dr Maud Stephan

Overview of Damage Photos



General Information

Entity Name	Assabil Association – Beirut Municipal Library - Getaoui
Founding Date	2004
Location	Rmeil, Jesuit Garden, Getaouui, Beirut
Director Name	Dr Maud Stephan

Overview of Damage Photos



General Information

Entity Name	Assabil Association – Beirut Municipal Library - Monot
Founding Date	2008
Location	Monot, Next to Monot Theater, St Joseph University St, Beirut
Director Name	Dr Maud Stephan

Overview of Damage Photos



General Information

Entity Name	American University of Beirut (AUB) - Jafet Memorial Library
Founding Date	1867
Location	American University of Beirut, Bliss St, Beirut
Director Name	Dr Lokman Meho

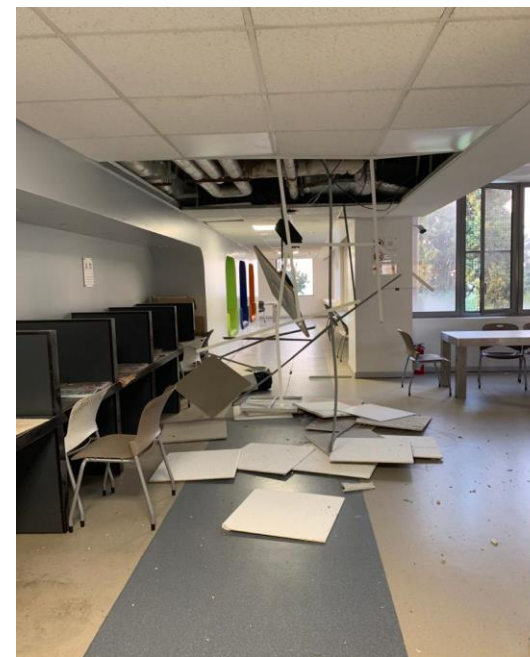
Overview of Damage Photos



General Information

Entity Name	American University of Beirut (AUB) - Jafet Memorial Library
Founding Date	1867
Location	American University of Beirut, Bliss St, Beirut
Director Name	Dr Lokman Meho

Overview of Damage Photos



General Information

Entity Name	St Joseph University (USJ) – Social Sciences Library
Founding Date	1913
Location	Social Sciences Campus, USJ, Rue Huvelin, Beirut
Director Name	Dr Leila Rizk

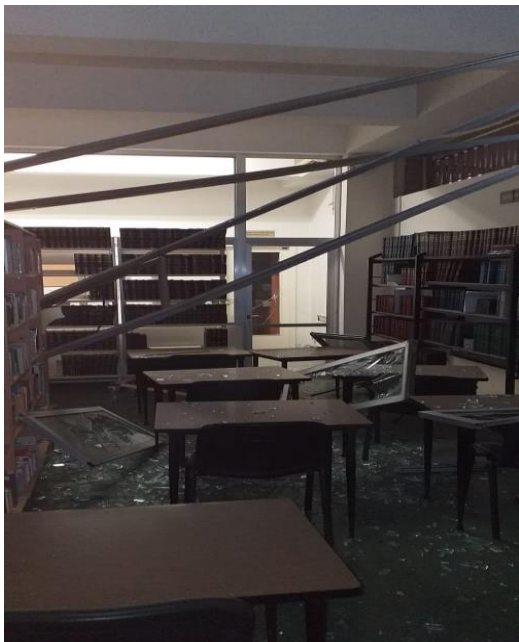
Overview of Damage Photos



General Information

Entity Name	St Joseph University (USJ) – Social Sciences Library
Founding Date	1913
Location	USJ Social Sciences Campus, Huvekin St., Beirut
Director Name	Dr Leila Rizk

Overview of Damage Photos



General Information

Entity Name	Lebanese American University - Riyad Nassar Library
Founding Date	2005
Location	Lebanese American University, Koraytem district, Beirut
Director Name	Ms Houeida Chararh and Ms Marie-Therese Mitri

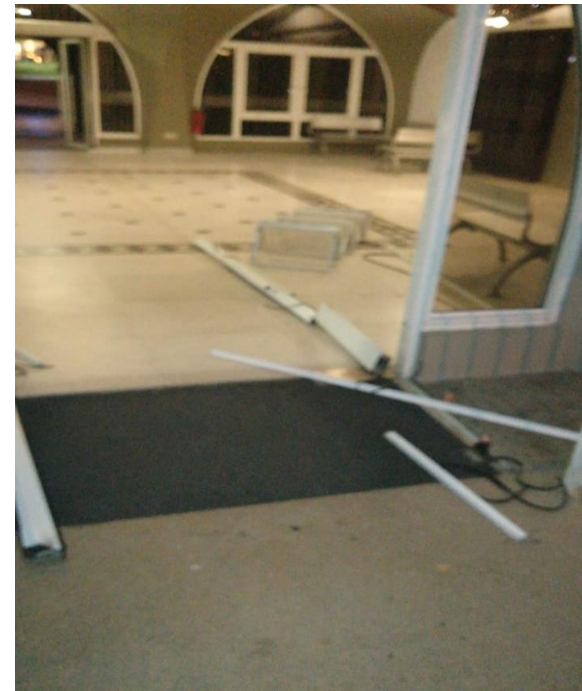
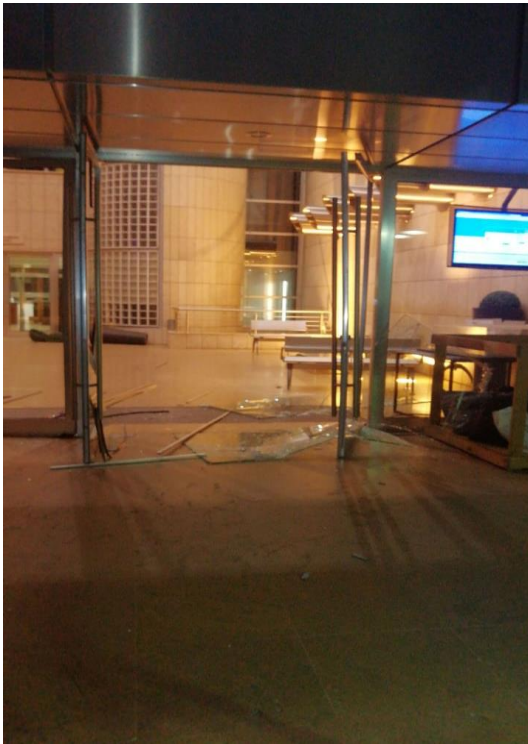
Overview of Damage Photos



General Information

Entity Name	Lebanese American University - Riyad Nassar Library
Founding Date	2005
Location	Lebanese American University, Koraytem district, Beirut
Director Name	Ms Houeida Chararh and Ms Marie-Therese Mitri

Overview of Damage Photos



General Information

Entity Name	St Joseph University (USJ) – Medical Sciences Library
Founding Date	1953
Location	Medical Sciences Campus, USJ, Damascus Rd., Beirut
Director Name	Ms May Samaha

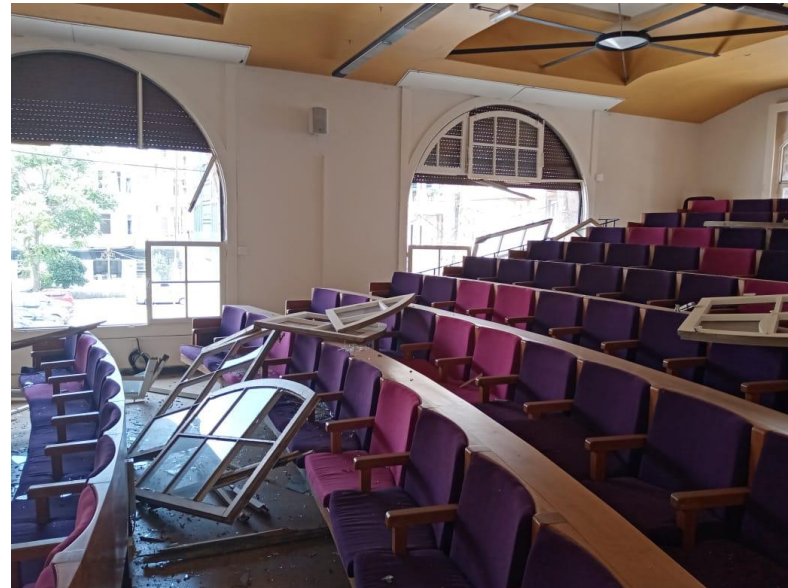
Overview of Damage Photos



General Information

Entity Name	St Joseph University (USJ) – Oriental Library
Founding Date	1875
Location	St Joseph University Rd, Achrafieh, Beirut
Director Name	Ms Micheline Bitar

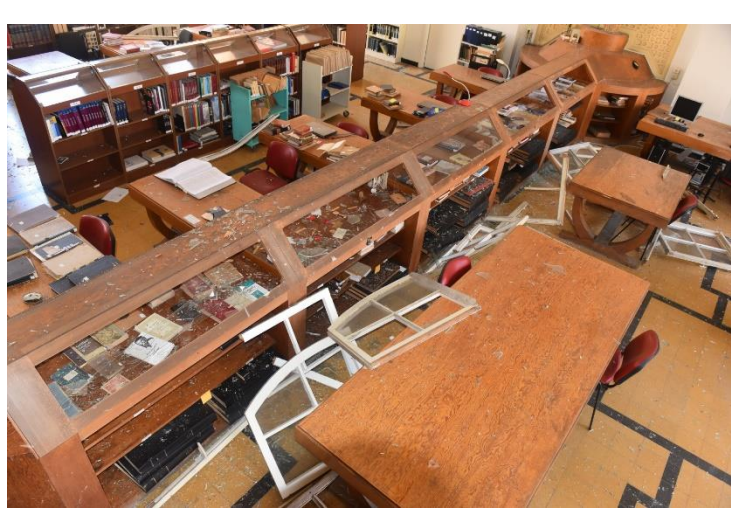
Overview of Damage Photos



General Information

Entity Name	St Joseph University (USJ) – Oriental Library
Founding Date	1875
Location	St Joseph University Rd, Achrafieh, Beirut
Director Name	Ms Micheline Bitar

Overview of Damage Photos



INSTITUTION GENERAL INFORMATION

Name of the Institution	General Directorate of Antiquities of Lebanon
Founding Date in Lebanon	1942
Name of current President	Sarkis Khoury
Assessment Supervised by	Sarkis Khoury

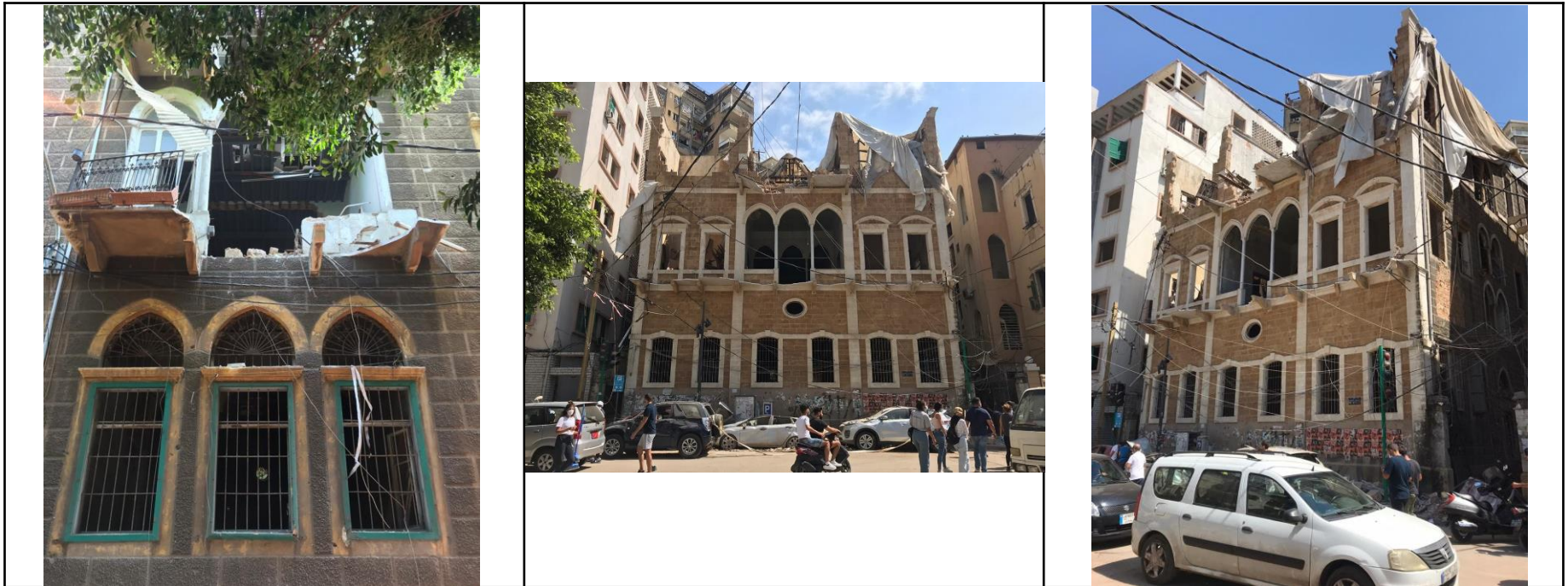
INSTITUTION GENERAL INFORMATION

Name of the national committee	Lebanese Committee of ICOMOS
Founding Date in Lebanon	2017
Name of current President	Dr Jeanine Abdel Massih
Assessment Supervised by	Dr Jeanine Abdel Massih

General Information

Entity Name	Historical houses of old Beirut
Location	Mar Mkhayel & Gemmayzeh
Director Name	Dr Jeanine Abdel Massih www.icomos.org

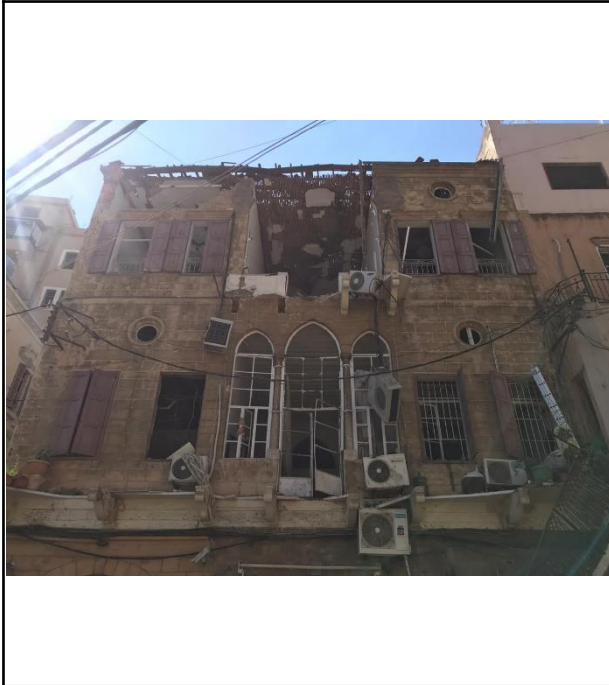
Overview of Damage Photos



ENTITY NO. 1 General Information

Entity Name	Historical houses of Beirut (XIX & XX century)
Location	Mar Mkhayel & Gemmayzeh

Overview of Damage Photos



General Information

Entity Name	Archaeological sites located in Beirut Down Town – Petit Serail
Location	Down Town Beirut

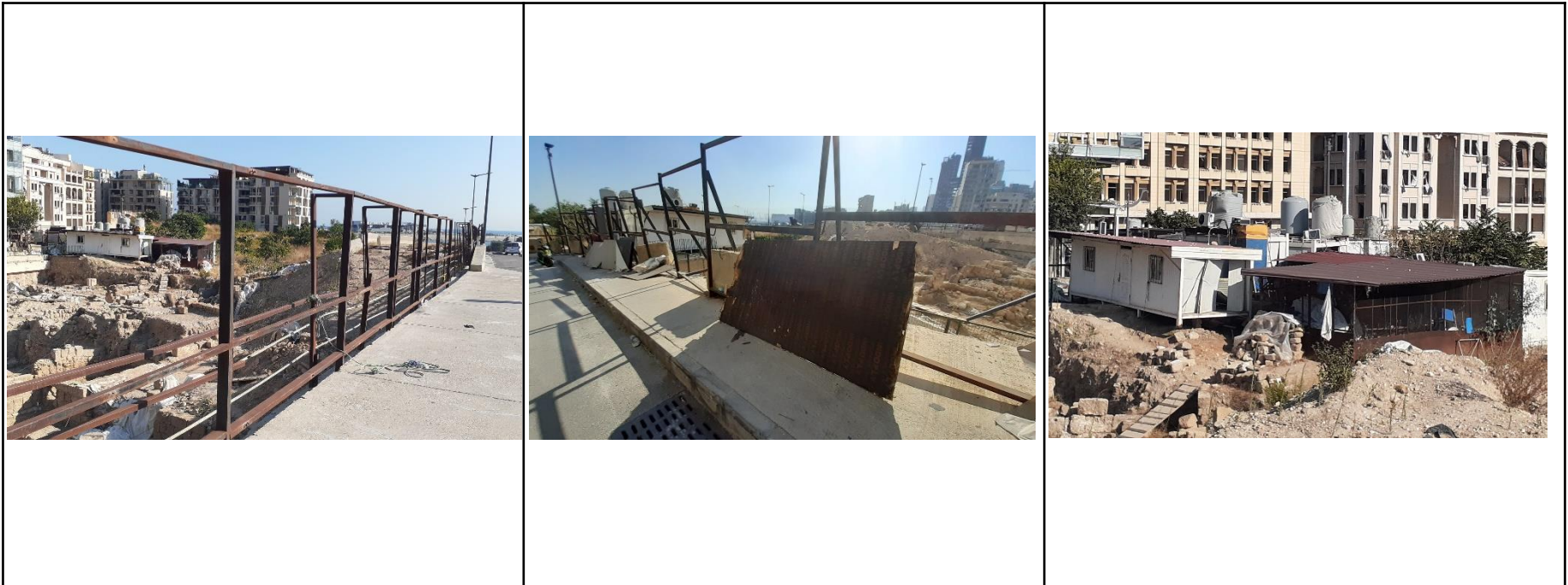
Overview of Damage Photos



General Information

Entity Name	Site of the museum of Beirut
Location	Beirut Down Town

Overview of Damage Photos



THANK YOU FOR ALL PARTNERS



الجمهورية اللبنانية
République Libanaise



United Nations
Educational, Scientific and
Cultural Organization
منظمة الأمم المتحدة
للثقافة والعلم والتربية

Beirut Office
مكتب بيروت



وزارة الثقافة
Ministère de la Culture
Conseil général des Musées
General Council of Museums
الهيئة العامة للمتاحف



ICOMOS LEBANON
ايكوموس لبنان

ICOM international
council
of museums
Lebanon



International Federation of
Library Associations and Institutions